

The Cosmo Compatibility Report for

**Jane Fonda**

and

**Lily Tomlin**



Data for Jane Fonda:  
December 21, 1937 9:14 AM  
Manhattan, New York  
40 N 46 73 W 59  
Standard time observed  
Time Zone: 5 hours West

Data for Lily Tomlin:  
September 1, 1939 1:49 AM  
Detroit, Michigan  
42 N 19 53 83 W 02 45  
Standard time observed  
Time Zone: 5 hours West

Sun	29	deg	19	min	Sagittarius
Moon	21	deg	59	min	Leo
Mercury	15	deg	34	min	Capricorn
Venus	18	deg	39	min	Sagittarius
Mars	29	deg	53	min	Aquarius
Jupiter	0	deg	19	min	Aquarius
Saturn	28	deg	42	min	Pisces
Uranus	10	deg	02	min	Taurus
Neptune	21	deg	09	min	Virgo
Pluto	29	deg	37	min	Cancer

Sun	7	deg	56	min	Virgo
Moon	3	deg	46	min	Aries
Mercury	20	deg	32	min	Leo
Venus	6	deg	41	min	Virgo
Mars	24	deg	23	min	Capricorn
Jupiter	7	deg	01	min	Aries
Saturn	0	deg	59	min	Taurus
Uranus	21	deg	58	min	Taurus
Neptune	22	deg	30	min	Virgo
Pluto	2	deg	05	min	Leo



UniverSoulLight Consulting  
Tarpon Springs, FL, USA  
UniverSoulLight@gmail.com  
www.UniverSoulLight.com

*Jane's Sun in Sagittarius and Lily's Sun in Virgo:*

While Lily tends to focus on the trees, Jane is interested in the forest. Very often Lily points out problems with specific details of any situation, while Jane would rather discuss the overall, general outlook rather than the practical details. These different approaches can balance each other. They are also likely to conflict with each other at times, especially when Jane feels that the details will take care of themselves and Lily should simply have more faith in the process.



Positively, you can work together, with Jane providing the energy, vision, and enterprise, and Lily providing the practical expertise, and skill. However, it is inevitable that Jane will feel annoyed with Lily's "pettiness" and criticism at times, and Lily will feel frustrated by Jane's sloppiness of thought or "irresponsible" behavior. Lily can benefit from Jane's enthusiasm and optimism, while Jane can benefit from Lily's pragmatism and humility (a quality Jane may lack).

*Jane's Moon in Leo and Lily's Moon in Aries:*

Both of you very much wish to believe in your own personal strength, and may mask feelings of weakness, inadequacy, or neediness. Proud and fiercely independent (especially Lily), neither of you readily admits that you need help or support.

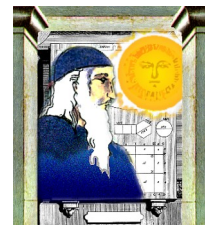


Both of you harbor a secret (or not so secret) desire to be the center of attention, to be on top, or to dominate - and you may compete for that position in your relationship. However, both of you also respect strong individuals and appreciate one another's integrity and individuality.

There is much compatibility between you if your strong egos do not get in the way.

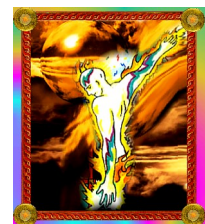
*Jane's Sun Trine Lily's Saturn:*

If the two of you depend on each other to accomplish practical tasks and be responsible, mature, and dependable to each other (such as in a business relationship or employer-employee relationship), then you will find that this aspect of your relationship is excellent. You can trust each other to get the job done and focus on the essential tasks. You have good attention to detail and you are able to focus on the most important issues when you work together. There is a strong sense of mutual commitment and dedication to each other.



*Lily's Sun Trine Jane's Uranus:*

Playfulness and a zest for newness infuse your relationship. You really spark each other's imagination and creativity. This quality is especially welcome in a long-term relationship because you will not fall into a lifeless routine. You spur each other to explore, take risks, and develop new creative outlets. You encourage each other's independence and you have faith in one another's creative, inventive ideas and interests.



*Jane's Moon Conjunct Lily's Mercury:*

You enjoy long conversations, confiding in each other, sharing your inner feelings and thoughts. You enjoy "psychoanalyzing" each other and others as well. At worst, this can degrade into gossip and at best it can provide a depth of mutual understanding and self-discovery that is enlightening, nourishing, and refreshing.



*Jane's Moon Square Lily's Uranus:*

The two of you can be eccentric and zany together. You snap each other out of your usual habits and you act spontaneously and creatively. Many times it is difficult for the two of you to focus on practical, mundane affairs together - you would rather spend your time together doing something more exciting and original. This relationship follows an unpredictable course and you are likely to come together and then drift apart frequently and unexpectedly.



*Lily's Mercury Trine Jane's Venus:*

You love to discuss the arts, literature, culture, or any other area that involves a strong aesthetic or emotional element. You are also likely to work successfully together in artistic, literary, or some humanitarian area. Your admiration for each other fosters a lasting, harmonious friendship.



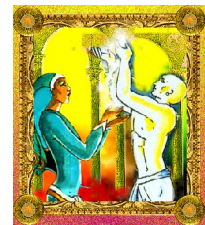
*Jane's Venus Square Lily's Neptune:*

You bring out the dreamy, artistic, poetic, romantic side of one another and your friendship can have a pronounced spiritual or platonic tone. Misunderstandings, evasiveness, or outright deception can easily occur between you, however, leading to disappointment and disillusionment over the failure of your friend to be all you hoped and imagined. Beware of seeing only what you want to see in one another, and be very cautious in any joint financial arrangements or investments.



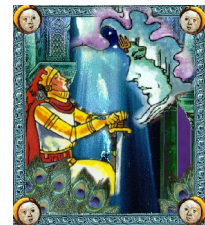
*Lily's Venus Trine Jane's Uranus:*

This is a lively, enthusiastic, exciting relationship. You feel very uninhibited with each other and are able to express yourselves freely with each other. If you both enjoy dancing, music, or similar sports, then you have found an excellent partner for these activities!



*Lily's Mars Trine Jane's Neptune:*

You enjoy watching movies, reading novels, discussing music and the arts, and pursuing religious or metaphysical areas together. You work well together in any area that involves a strong imaginative element. The spiritual bond between you is strong, and as you spend time together, your ideals and your sense of purpose in life becomes more refined and intertwined.



*Jane's Mars Sextile Lily's Saturn:*

You can work together very effectively, focusing your energy and attention on the tasks at hand. Jane feels that Lily will stand behind Jane's efforts and be a solid supporter, and Lily's experience or practicality is often a help to Jane.

